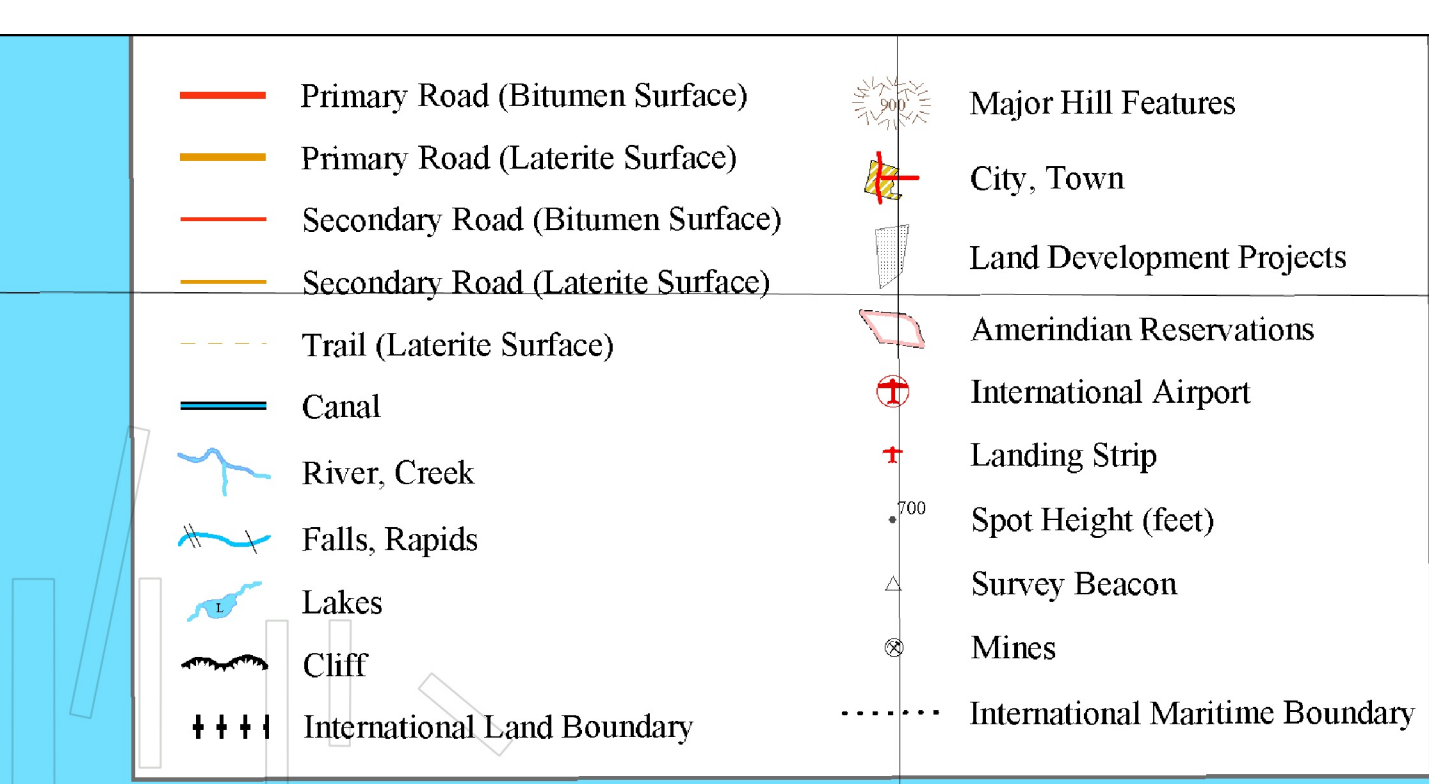


MINERAL PROPERTY STATUS OF GUYANA

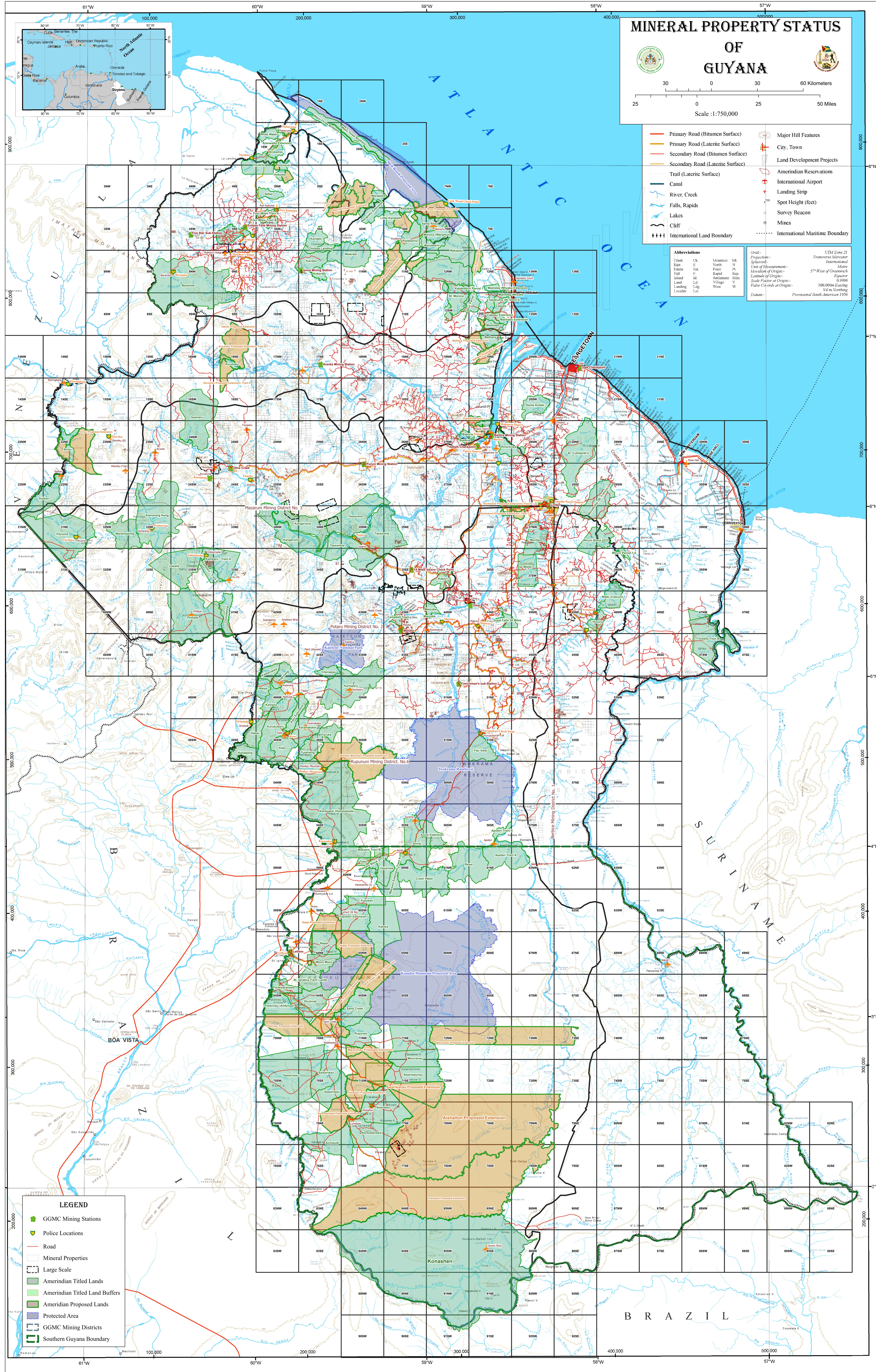


- Primary Road (Bitumen Surface)
- Primary Road (Laterite Surface)
- Secondary Road (Bitumen Surface)
- Secondary Road (Laterite Surface)
- Trail (Laterite Surface)
- Canal
- River, Creek
- Falls, Rapids
- Lakes
- Cliff
- International Land Boundary

- Major Hill Features
- City, Town
- Land Development Projects
- Amerindian Reservations
- International Airport
- Landing Strip
- Spot Height (feet)
- Survey Beacon
- Mines
- International Maritime Boundary

Abbreviations		Grid	
Creek	Cl.	Mountain	Mt.
Island	I.	North	N
Islet	Is.	Point	Pt.
Fall	F.	Rapid	Rap.
Island	Is.	Settlement	Sett.
Land	Ld.	Village	V.
Landing	Ld.	West	W
Locality	Loc.		

Grid	
Projection	Transverse Mercator
Standard	International
Unit of Measurement	Meter
Meridian of Origin	57° West of Greenwich
Latitude of Origin	Equator
Scale Factor at Origin	1.0000
Scale Factor at Equator	500,000m Easting
False Coordinates	500,000m Easting 500,000m Northing
Datum	Provisional South American 1956



- LEGEND**
- GGMC Mining Stations
 - Police Locations
 - Road
 - Mineral Properties
 - Large Scale
 - Amerindian Titled Lands
 - Amerindian Titled Land Buffers
 - Amerindian Proposed Lands
 - Protected Area
 - GGMC Mining Districts
 - Southern Guyana Boundary